

National Weather Service Forecast Office Corpus Christi, TX



Home

News

Organization

Search for:



All NOAA

Go

Point Forecast: Port Aransas TX
27.84N 97.06W

Last Update: 4:40 am CDT Oct 25, 2012

Hourly Weather Forecast Graph

[dashes/dots] [b/w] [hide menu]

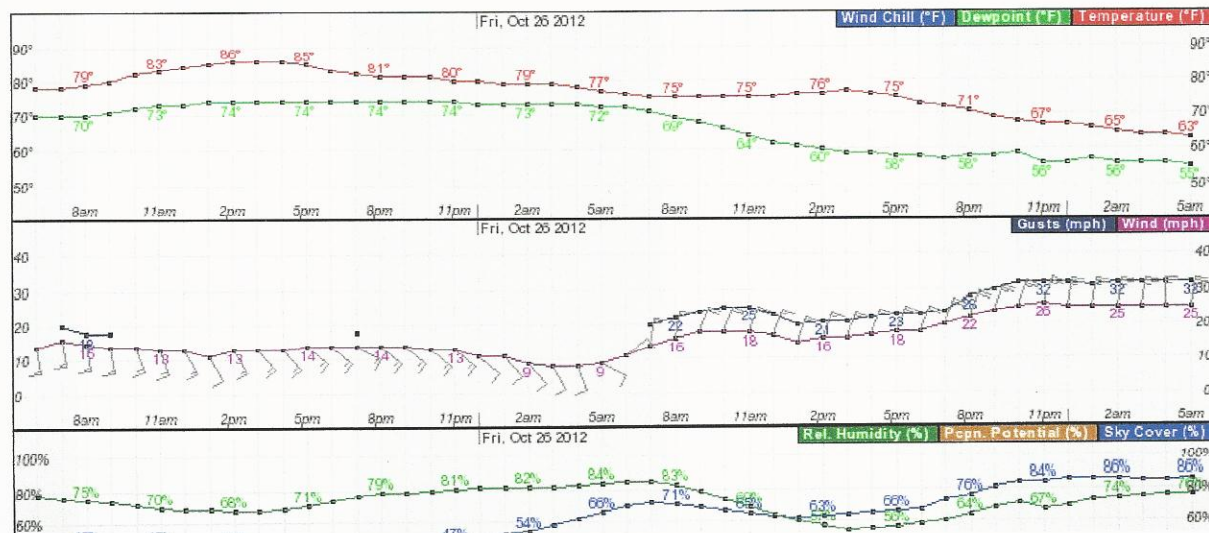
Weather Elements	Fire Weather	Probabilistic Forecasts (Experimental)
<input checked="" type="checkbox"/> Temperature (°F) <input checked="" type="checkbox"/> Dewpoint (°F) <input checked="" type="checkbox"/> Wind Chill (°F) <input checked="" type="checkbox"/> Surface Wind mph <input checked="" type="checkbox"/> Sky Coverage <input checked="" type="checkbox"/> Precipitation Potential <input checked="" type="checkbox"/> Relative Humidity <input checked="" type="checkbox"/> Thunder <input checked="" type="checkbox"/> Rain <input checked="" type="checkbox"/> Snow <input checked="" type="checkbox"/> Freezing Rain <input checked="" type="checkbox"/> Sleet	<input type="checkbox"/> Mixing Height (x100ft) <input type="checkbox"/> Haines Index <input type="checkbox"/> Lightning Activity Level <input type="checkbox"/> Trans. Wind mph <input type="checkbox"/> 20ft Wind mph <input type="checkbox"/> Vent Rate (x1000 mph-ft) <input type="checkbox"/> Dispersion Index	Quantitative Precipitation 6-hr info <input type="checkbox"/> 0.10 <input type="checkbox"/> 0.25 <input type="checkbox"/> 0.50 <input type="checkbox"/> 1.00

48-Hour Period Starting: 6am Thu, Oct 25 2012

Submit

Back 2 Days

Forward 2 Days



National Weather Service National Headquarters

National Weather Service

Area Forecast Discussion

Issued by NWS Houston/Galveston, TX

[Current Version](#) | [Previous Version](#) | [Text Only](#) | [Print](#) | [Product List](#) | [Glossary Off](#)

Versions: [1](#) [2](#) [3](#) [4](#) [5](#) [6](#) [7](#) [8](#) [9](#) [10](#) [11](#) [12](#) [13](#) [14](#) [15](#) [16](#) [17](#) [18](#) [19](#) [20](#) [21](#) [22](#) [23](#) [24](#) [25](#) [26](#) [27](#) [28](#) [29](#) [30](#) [31](#) [32](#) [33](#) [34](#) [35](#) [36](#) [37](#) [38](#)
[39](#) [40](#) [41](#) [42](#) [43](#) [44](#) [45](#) [46](#) [47](#) [48](#) [49](#) [50](#)

000
FXUS64 KHGX 250854
AFDHGX

AREA FORECAST DISCUSSION

NATIONAL WEATHER SERVICE HOUSTON/GALVESTON TX
354 AM CDT THU OCT 25 2012

.DISCUSSION...

STREAMER SHOWERS CONTINUE TO MOVE IN FROM THE GULF JUST EAST OF MATAGORDA BAY THIS MORNING AND THIS TREND WILL CONTINUE FOR MUCH OF THE MORNING. PW VALUES ARE BETWEEN 1.2 AND 1.4 INCHES TODAY AND UPPER LEVEL WINDS WILL REMAIN DIVERGENT SO FEEL SHOWERS WILL BE POSSIBLE ALL DAY. TODAY WILL BE THE LAST OF THE UNSEASONABLY WARM DAYS AS THE UPPER LEVEL RIDGE RETREATS TO THE SOUTHWEST.

AT 08Z...A STRONG COLD FRONT EXTENDED ACROSS SOUTH CENTRAL KANSAS INTO THE TEXAS PANHANDLE. THE FRONT WILL PUSH ACROSS THE STATE TODAY AND APPROACH SOUTHEAST TEXAS TONIGHT. THE NAM AND GFS ARE IN GOOD AGREEMENT WITH THE FRONTAL TIMING AND THE FRONT WILL CROSS THE NORTHERN HALF OF SOUTHEAST TEXAS BY SUNRISE FRIDAY AND MOVE ACROSS THE REMAINDER OF THE REGION BY NOON. HIGH TEMPERATURES WILL OCCUR DURING THE MORNING WITH STEADY OR SLOWLY FALLING TEMPERATURES IN THE AFTERNOON. THE COLD AIR ADVECTION LOOKS STRONG AND WITH CLOUD COVER...AM WORRIED THAT MAX TEMPS WILL STRUGGLE TO REACH 60 DEGREES OVER THE NORTH AND LIKELY REMAIN IN THE 60S ELSEWHERE. MOISTURE LEVELS ARE MEAGER AND PARAMETERS FOR RAIN ARE OUT OF PHASE. INSTABILITY LOOKS WEAK BUT WILL CONTINUE TO MENTION THUNDER BUT THE PRIMARY PRECIP TYPE WILL BE LIGHT RAIN. FCST SOUNDINGS SHOW CLOUD COVER HANGING AROUND FRIDAY AND FRIDAY NIGHT WITH SOME CLEARING NOTED SATURDAY AFTERNOON. GENERALLY CLEAR SKIES ARE EXPECTED SAT NITE THROUGH MONDAY AS HIGH PRESSURE BUILDS INTO THE CENTRAL PLAINS. WINDS WILL DECOUPLE SUNDAY MORNING AND WITH CLEAR SKIES IN PLACE...AM EXPECTING MIN TEMPS TO FALL INTO THE UPPER 30S AND LOWER 40S OVER MUCH OF THE REGION (AWAY FROM THE COAST). 850 MB TEMPS ON SUNDAY ARE ONLY AROUND 5 C SO DESPITE SUNSHINE ON SUNDAY...FEEL MAX TEMPS WILL STAY IN THE UPPER 60S. THE SURFACE HIGH SHIFTS EAST ON TUESDAY AND ONSHORE WINDS WILL BRING BACK SLIGHTLY WARMER AIR. 43

&&

.MARINE...

A LIGHT TO MODERATE ON-SHORE FLOW SHOULD REMAIN IN PLACE UNTIL THE PASSAGE OF A COLD FRONT FRIDAY MORNING. OVERNIGHT WINDS ARE SUSTAINED IN THE 15-20 KNOT RANGE...SO HAVE RAISED SCEC FLAGS UNTIL 7AM THIS MORNING. WINDS SHOULD QUICKLY DROP TO THE 5 TO 10 KNOT RANGE WITH A LITTLE DAYTIME HEATING. RADAR INDICATES THAT THERE ARE SOME ISOLATED STREAMER SHOWERS OVER THE COASTAL WATERS BETWEEN GALVESTON AND MATEGORDA BAYS...HOWEVER COVERAGE AND INTENSITY REMAIN LIGHT.

THE MODEL CONSENSUS FOR THE TIMING OF FRIDAYS FRONTAL PASSAGE HAS MOVED UP A LITTLE FROM WHAT WAS FORECAST 24 HOURS AGO. AT THIS TIME...ANTICIPATE FRONTAL PASSAGE FOR THE BAYS/NEARSHORE WATERS AROUND DAYBREAK ON FRIDAY...AND INTO THE OFFSHORE WATERS BY NOON. SMALL CRAFT ADVISORIES ARE LIKELY FOR THE ENTIRE HGX MARINE WARNING AREA STARTING FRI NIGHT AND CONTINUING THROUGH SATURDAY MORNING AS STRONG/GUSTY NORTHERLY WINDS SETTLE IN BEHIND THE FRONT. THESE ADVISORIES MAY LINGER INTO LATE SATURDAY...ESPECIALLY FOR THE OFFSHORE WATERS. 44

&&

.AVIATION...

HAVE REMOVED MENTION OF EARLY MORNING FOG FROM TAFS BECAUSE MOST SURFACE WINDS REMAIN ELEVATED AT 5 TO 10 KNOTS AND OVERNIGHT TEMPERATURES ARE RUNNING A LITTLE WARMER THAN LAST NIGHT. CLL IS EXPERIENCING IFR CIG CONDITIONS UNDER A LARGE STRATUS DECK THAT EXTENDS WEST AND NORTH INTO CENTRAL AND NORTHERN TEXAS. DO NOT

Long Range Forecast Tuesday						
	W	T	F	S	S	W
Galveston	SE10-15	SSE10-15	N15-20	NNE15-20	NNE10-20	ENE10-15
Freeport	SE10-15	SSE10-15	N15-20	N10-15	NNE10-15	ENE10-15
Port Lavaca (MG)	SE5-15	SSE10-15	N15-20	NNE10-20	NNE10-15	SE10-15
Rockport	SE5-15	SSE10-15	NNE15-25	NNE15-20	NNE10-15	SSE5-10
PA	SE15-20	SE15-20	NE15-20	N15-20	NNE15-20	SSE10-15
G-FP	SE10	SE10-15	E5-10 to NE 10-15 N incr 20-25 night	N15-20	NE10-15	
low confidence ETA CFT Late F/Sat					stable night	
FP-MG	SE10	SE10-15 SE5-10 night	E5-10 to NE10-15 N15-20-25 night	N15-20		
MG-PA	SE10-15	SE10-15	E5-10 to NE NE15-20-25 night	N20-25 to 15-20		

Long Range Forecast Wednesday						
	W	T	F	S	S	W
Galveston	SE15-20	SSE10-15 N: SE5-10	ENE5-15 pm to (W)?	N15-25	NNE10-20	SSE5-10
Freeport	SE10-15	SSE10-15	NE5-15 pm to (W)?	N10-20	NNE10-15	SSE5-10
Port Lavaca (MG)	SE5-15	SSE5-10	E15-20 pm to (W)? N: N15-20	N10-20	NNE10-15	SE5-10
Rockport	SE10-15	SSE10-15	NNE10-20 N: N15-25	N15-20	NNE10-20	SSE5-15
PA	SE10-15	SSE10-15 N: SSE10-15	NNE5-20 N: N20-25	N15-20	NNE10-20	SSE5-15
CFT off coast F pm F night increase wind to SCW						
G-FP	SE15-20 N: N10-15	SE10-15 N: SE5-10	NE5-10 pm incr 15-20 N20	N15-20	NE15-20 N: NE10-15	
FP-MG	SE15-20 decr 10-15	SE10-15	NE5-10 pm N15-20 N20	N15-20 decr pm 10-15	NE10-15	
MG-PA	SE10-15	SE10-15	NE10-15 pm N15-20 N20-25	N20-25 pm decr 15-20	NE15-20 pm decr 10-15	

WS knots later 6 hr

FP - 2100 TH

MG - 7200 Fri

PA - 1800/1900 Fri

5-6 hrs
NNE/W
15-20

Winds ↑ Fri afternoon

Winds back Fri ~ 3pm

according to hr/hr

chart Fp ✓ G ✓ PA ✓
3-6 pm 3-6 pm

Fri lunch warm

& change Jenna
key before lunch



Your National Weather Service forecast

Coastal waters from Freeport to Matagorda Ship Channel TX out 20 NM (GMZ350)



Enter Your "City, ST" or zip code

Go

BOOKMARK



NWS Houston, TX

Zone Forecast: Coastal waters from Freeport to Matagorda Ship Channel TX out 20 NM (GMZ350)

Mobile Weather Information

Last Update: 434 AM CDT THU

OCT 25 2012

Marine Zone Forecast

Synopsis...A BROAD AREA OF HIGH PRESSURE OVER THE EASTERN UNITED STATES...IN TANDEM WITH CENTRAL PLAINS LOW PRESSURE...WILL MAINTAIN LIGHT TO MODERATE ONSHORE WINDS TODAY. CAUTION FLAGS CURRENTLY IN EFFECT SHOULD BE LOWERED SHORTLY AFTER SUNRISE. A COLD FRONTAL PASSAGE FRIDAY MORNING WILL REQUIRE SMALL CRAFT CAUTIONS DURING THE DAY FRIDAY AND ADVISORIES FRIDAY NIGHT INTO SATURDAY AS STRONG OFFSHORE WINDS DEVELOP IN ITS WAKE.

Today: Southeast winds 10 to 15 knots. Seas 2 to 4 feet. A slight chance of showers in the morning.

Tonight: Southeast winds 10 to 15 knots becoming southwest after midnight. Seas 2 feet.

Friday: North winds 15 to 20 knots. Seas 2 to 4 feet. A chance of showers and thunderstorms.

Friday Night: North winds 20 to 25 knots. Seas 4 to 6 feet. A slight chance of rain.

Saturday: North winds 15 to 25 knots becoming 15 to 20 knots in the afternoon. Seas 4 to 6 feet.

Saturday Night: North winds 15 to 20 knots. Seas 3 to 5 feet.

Sunday: North winds 15 to 20 knots. Seas 3 to 4 feet.

Sunday Night: Northeast winds 15 to 20 knots. Seas 3 to 4 feet.

Monday: Northeast winds 15 to 20 knots decreasing to 10 to 15 knots in the afternoon. Seas 2 to 4 feet.

Monday Night: East winds 10 to 15 knots. Seas 1 to 2 feet.

***Notices:** (1) This forecast is for a single location. For safety concerns, mariners should be aware of the weather over a larger area. Forecast information for a larger area can be found within the [zone forecast](#) and the [NDFD](#) graphics.

Current Conditions

[Move Down]

8773701 - Matagorda Bay; Port O'Connor

Lat: 28.45 Lon: -96.39 Elev: 0

Last Update on Oct 25, 3:00 am CST

Nearby Observations

Wind: S 10 KT

Pressure: 1010.5 mb

Air Temperature: 78 °F (26 °C)

Water Temperature: 77 °F (25 °C)

Past Observations

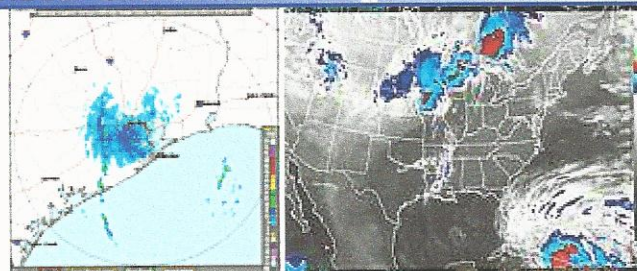
Dewpoint:: NA

Wave Hgt/Dir: NA

Dominant Wave Period: NA

Visibility: NA

Radar and Satellite Images



Select Another Point

[Move Up]

Click Map for Forecast

Disclaimer

